

# PCQC & PCQN

Improving Quality, Together

JULY 17, 2020



# PCQC Mission

- Transforming healthcare by measuring, defining, and promoting quality palliative care through national learning collaboratives.
- PCQC is committed to improving the care of seriously ill patients and their families.

# Why You Should Join PCQC

- Improve patient care through rapid cycle quality improvement

Improve Patient Care



- Empower palliative care service providers to demonstrate their value to health systems

Demonstrate Value



- Provide the capacity for EHR integration

EHR Integration



- Design, test and implement quality measures that matter for seriously ill patients

Palliative Care Quality Measures



- Assure the quality of palliative care services

Quality Services



- Collect and report data on quality measures in value-based purchasing agreements with payers

Value Based Purchasing



- Create a learning health system for the seriously ill

Learning Health System



- Create a national peer network and collaborative quality projects

Networking and Collaboration



- Ensure that data from different providers measures the same thing – using a standardized approach to increase confidence, consistency, reliability, and benchmarking capabilities

Standardization and Benchmarking



- Improve palliative care research efforts

Research



# PCQC: Leveraging data to improve care



**DATA**



**KNOWLEDGE**

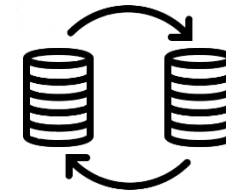
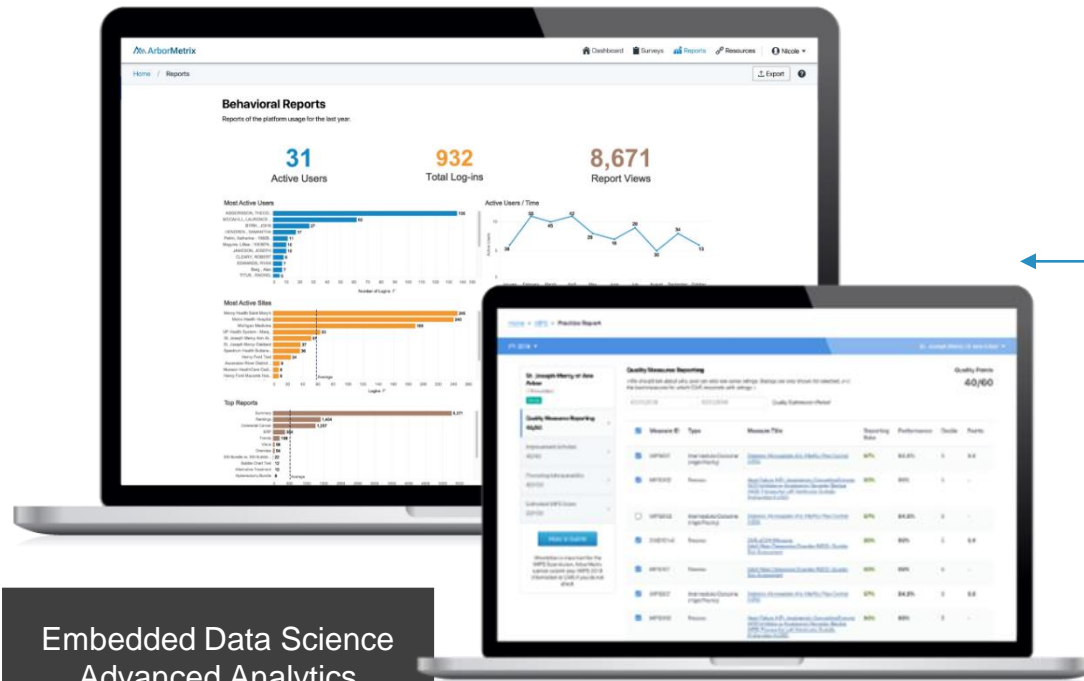


**ACTION**

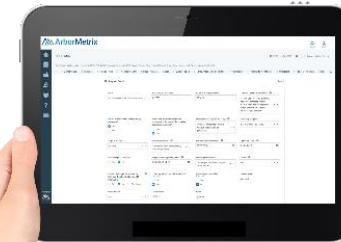
# Example of an ArborMetrix Registry Product

Registries on ArborMetrix Registry<sup>x</sup>

Data Acquisition



EMR Integration



Smart Web Forms

Embedded Data Science  
Advanced Analytics  
Risk & Reliability  
Adjustment

# Visualizations and Interactive Experience

ArborMetrix Registry<sup>X</sup> provides access to all patient details with flexible reporting.

ArborMetrix

Admin Dashboard

Lists / Patient List / Patient #21479

Doe, John (Case ID: 21479)  
MRN: XXX-XXXXX  
Date of First Consult: 31-Dec-2018

**Patient Details**

MRN \*  
1111

Institution \*  
Royal Oak (20802)

Date of Birth  
01/01/1950

Age at First Consult (calculated)  
68

Racial Background \*  
Other

Spanish/Hispanic  
Unknown

Gender \*  
Female

Eligibility \*  
Eligible

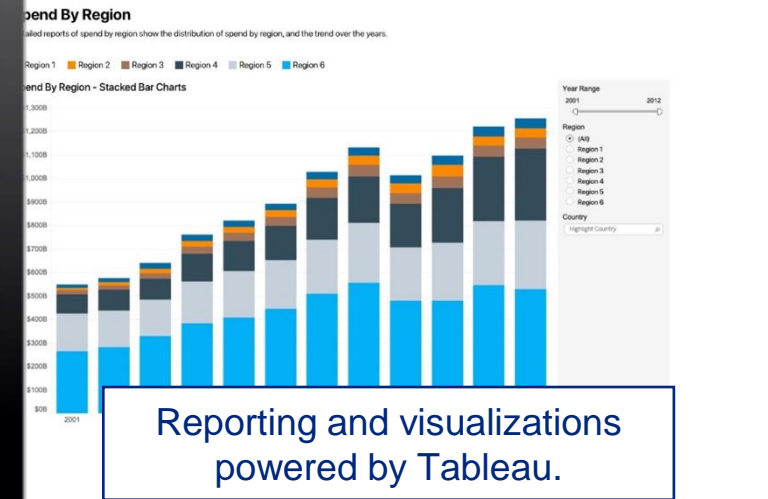
Date of First  
07/01/2018

Type of Specialty Seen on First Consult \*  
Medical Oncologist

Medical Oncologist \*  
Shepard, Jack : 79412

- Details
- Diagnosis
- Demographics
- Surgical Profile
- Preop
- Intraop
- Prophylactic IV Antibiotics
- Postop Occurrences
- Postop Events
- Follow-up
- ERP

Patient details can be viewed, modified and exported.



Reporting and visualizations powered by Tableau.

# PCQC Registry Reports



Summary

Stats on core & optional data elements



Trend

Over time for various user selected measures



Member Comparison

Benchmark reports to appropriate cohorts



Cross-tab

Tables showing the relationship between two variable



Database Queries

# Join the PCQC Community Online and In- Person

## Webinars

- Member led and Content experts
- Specific topics and case review

## Strategy Exchanges

- EHR Integration

## Longitudinal Learning

- Single topic, Multiple Sessions

## PCQC Meetings (when feasible)

- Annual
- Regional In-person Conferences

## Engage with PCQC on Social

- Twitter @palliativequal
- LinkedIn PCQC company page



# Joining PCQC



# When a door opens, another closes.

- The PCQC Registry will be available soon
  - View program-level data from what was the National Palliative Care Registry (moving in its entirety)
  - Manual data abstraction of patient-level data
  - EHR Data Integration – if you have set it up with ArborMetrix
  - Programs will be able to upload their historical data post-launch
- PCQN is winding down (**updated deadlines/timelines** will be provided as soon as they're available)
  - Our goal is to ensure that you will continue to have access to the PCQN database to aid with the transition to the PCQC registry
  - When you complete the PCQC membership agreement, you will have an overlap to access both PCQN and PCQC registries

# Reach out to get more information about the **PCQC**

**Are you a current registry participant with questions? Contact:**

- Palliative Care Quality Network  
[PCQNSupport@ucsf.edu](mailto:PCQNSupport@ucsf.edu)

**Are you a potential registry participant with questions? Contact:**

- Lance Mueller  
→ [Lmueller@palliativequality.org](mailto:Lmueller@palliativequality.org)
- Kelly McKenna  
→ [KMckenna@palliativequality.org](mailto:KMckenna@palliativequality.org)
- PCQC Info  
→ [Info@palliativequality.org](mailto:Info@palliativequality.org)

**Palliative Care Quality Collaborative**

PalliativeQuality.org

8735 W Higgins Rd

Suite 300

Chicago, IL 60631

